



WELCOME

Hotel Grand Chancellor Hobart is located in Hobart's waterfront precinct and offers stunning views across the River Derwent and the harbour towards the eastern shore and Salamanca. Our position is central to all areas of the city with Salamanca, Battery Point and the CBD all just a few minutes' walk from the hotel. We're also close to many of

the local attractions such as TMAG, MONA Ferry, Maritime Museum, Theatre Royal to name a few. The hotel has a bar and restaurant overlooking the waterfront. Every floor offers a viewing lounge to relax and take in the surrounds. Whether you are visiting for business or leisure, Hotel Grand Chancellor Hobart is the perfect location.



ROOMS

The Hotel Grand Chancellor Hobart features 244 spacious guest rooms and suites offering city/mountain views or stunning harbour views. Guest rooms are stylishly furnished with contemporary décor, optional king bed or two double beds, wireless internet access, and a spacious en-suite marble bathroom. Executive Suites provide additional space in the form of a separate lounge and bedroom, plus an option to interconnect to an additional guest room.

Key Features: Air conditioning and heating, LCD televisions, cable TV and pay-per-view movies; free Wi-Fi, radio alarm clocks with an iPod docking, mini fridge, iron and ironing board, work desk, kettle with tea and coffee selection, 24 hour room service and bathroom amenities.

Hotel Information: Check in time 3.00pm, check out time 11.00am.



A Member of Grand Hotels International
www.ghihotels.com
Australia · New Zealand · Malaysia · Singapore · China

grandchancellorhotels.com
1800 75 33 79



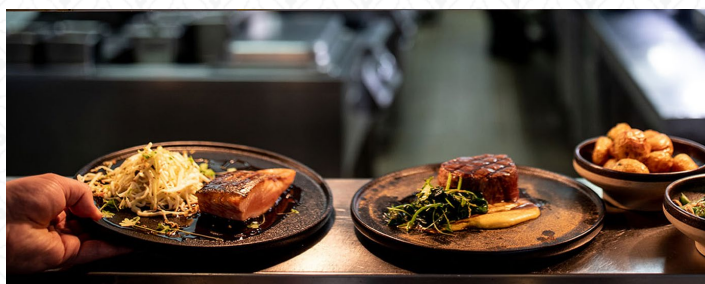
HOTEL GRAND CHANCELLOR HOBART

FACILITIES

The hotel is a recognised city landmark housing fully equipped convention and exhibition facilities and is a great choice for both business and leisure guests. The hotel also boasts its own heated indoor swimming pool, plus a well-equipped gym and sauna exclusively for hotel guests.



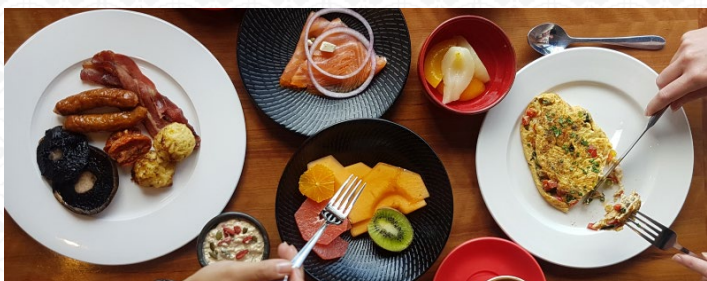
Restaurant Tasman focuses on showcasing the best of Tasmanian produce and is open for buffet breakfast and dinner daily. The Atrium Bar provides light snacks and refreshments during the day and evening, plus High Tea from 11am to 4.30pm (bookings essential).



HIGHLIGHTS

- 244 rooms
- Convenient central location
- Walking distance to CBD, Salamanca, Pennicott Wilderness Journeys and MONA Ferry
- Coach Parking
- Complimentary in-room Wi-Fi
- Harbour and mountain views

- 24-hour room service
- 24-hour reception
- Indoor heated pool
- Gym and sauna
- Undercover car parking
- Walk-in showers available or shower with bath
- Laundry facilities



Hotel Grand Chancellor Hobart
1 Davey Street Hobart TAS 7000 Australia
Phone: +61 (3) 6235 4535, Fax: +61 (3) 6223 8175
enquiries@hgchobart.com.au

A Member of Grand Hotels International
www.ghihotels.com
Australia · New Zealand · Malaysia · Singapore · China

grandchancellorhotels.com
1800 75 33 79

